



Sliding Door EBS 40

- **Free Movement**
The door hangs free from frame and floor.

✓ **So easy to move!**

- **Rammer Shield**
(on front and back)

✓ **So strong!**

- **Lifelong Greasing**
of the wheels
(the track needs no greasing)

✓ **So low-maintenant!**

- **HELM-Track**
(double-wheels and handle stainless steel)

✓ **So hygienic!**

- **Track-cover**
removable cover over the whole track and motor of a optional automatic

✓ **so good looking und hygienic!**



Sliding Door EBS 40

Frame

- 2,0 mm Stainless Steel
- Welded
- Guiding Plugs

Leaf

- 40 mm PU foamed
- Overlaying

Iron Fittings

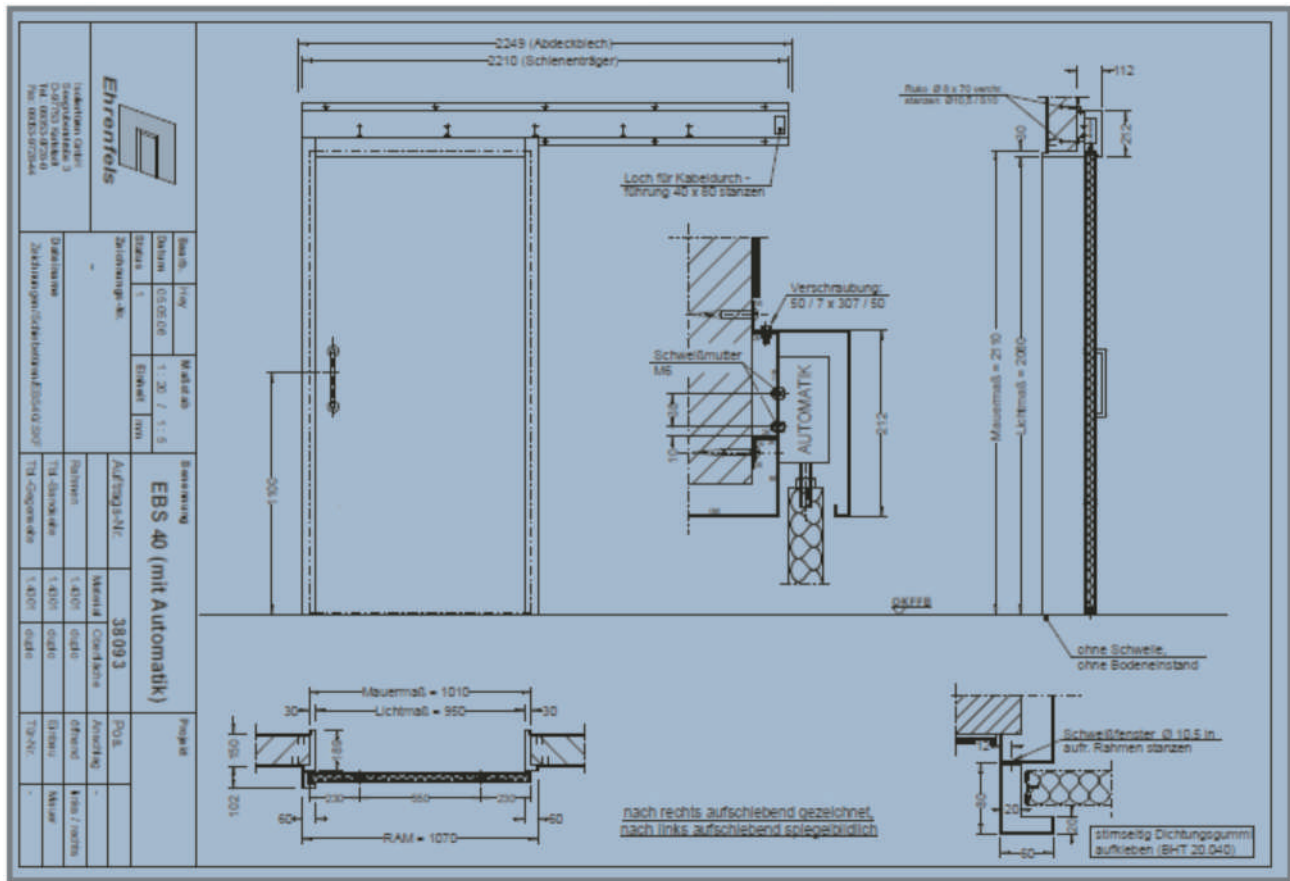
- HELM-Track
- Double Wheels
- Stainless Steel Handle

Surface

- Stainless Steel
- Plastic Covered White RAL 9002

Variations

- PZ Lock
- 2 Leaves
- Frame for ... mm PU Panel
- E-Automatic with Electronic Safety Circuit



Call us now, send a fax or eMail! We'd be pleased to serve you!

Tel. 09353/9728-0 Fax 09353/9728-44

- Chiller and Freezer Room Doors
- Service Room Doors
- Stainless Steel Doors
- Swing / Polythen Doors

Ehrenfels Isoliertüren GmbH
Seegrubenstraße 3 / OT Karlburg
D-97753 Karlstadt / GERMANY

e-Mail: info@ehrenfels.de
homepage: www.ehrenfels.de



Ehrenfels