



Hinged Door KE 15.070

- **Welded Frame
2,0mm Stainless Steel**
- ✓ **So strong and
hygienic!**
- **Hinges Stainless Steel**
- ✓ **So corrosion
resistant!**
- **All Metal Fittings Are
Screwed, Not Riveted
(hinges, handle, shield,
lock)**
- ✓ **So low in mainte-
nance!**
- **Stainless Steel
Pressing Handle
And Lock**
- ✓ **So robust!**
- **4-Sides Rubber**
- ✓ **So hermetic and
so silent!**



Chiller Room Doors

Hinged Door KE 15.070

Frame

- 2,0 mm Stainless Steel
- Welded

Leaf

- 85 mm PU foamed
- Overlaying
- 4 Sides Rubber

Iron Fittings

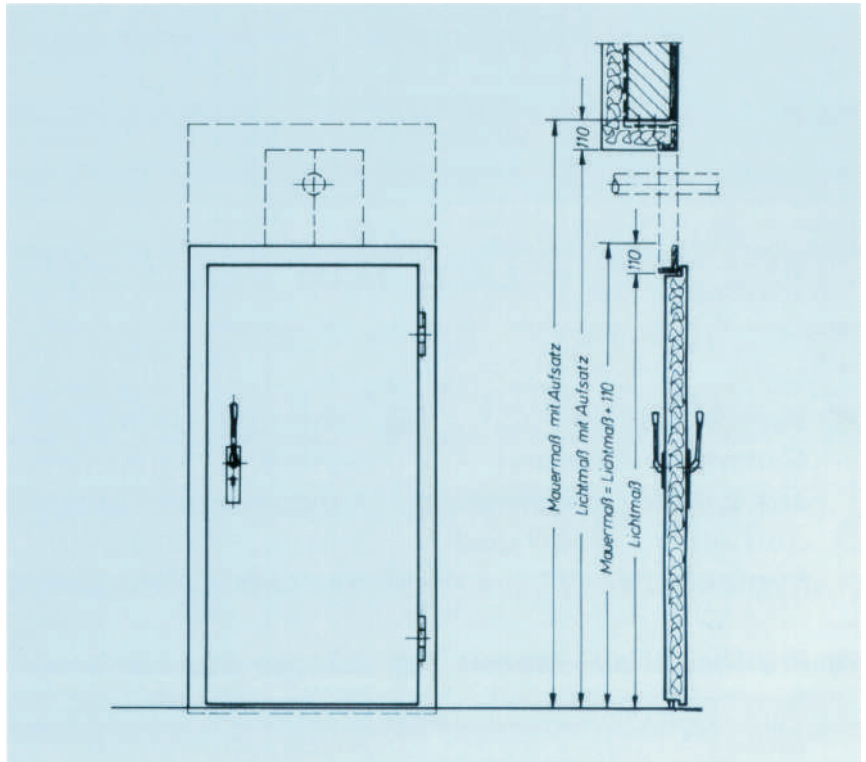
- Stainless Steel Pressing Handle
- Stainless Steel Hinges (rising)
- PZ-Lock

Variations

- Window
- Top For Rail Transport System
- 2 Leaves
- Frame for ... mm PU Panel

Surface

- Stainless Steel
- Aluminium
- Plastic Covered White RAL 9002



Call us now, send a fax or eMail! We'd be pleased to serve you!

Tel. 09353/9728-0 Fax 09353/9728-44



- Chiller and Freezer Room Doors
- Service Room Doors
- Stainless Steel Doors
- Swing / Polythen Doors

Ehrenfels Isoliertüren GmbH
Seegrabenstraße 3 / OT Karlburg
D-97753 Karlstadt / GERMANY

e-Mail: info@ehrenfels.de
homepage: www.ehrenfels.de



Ehrenfels